

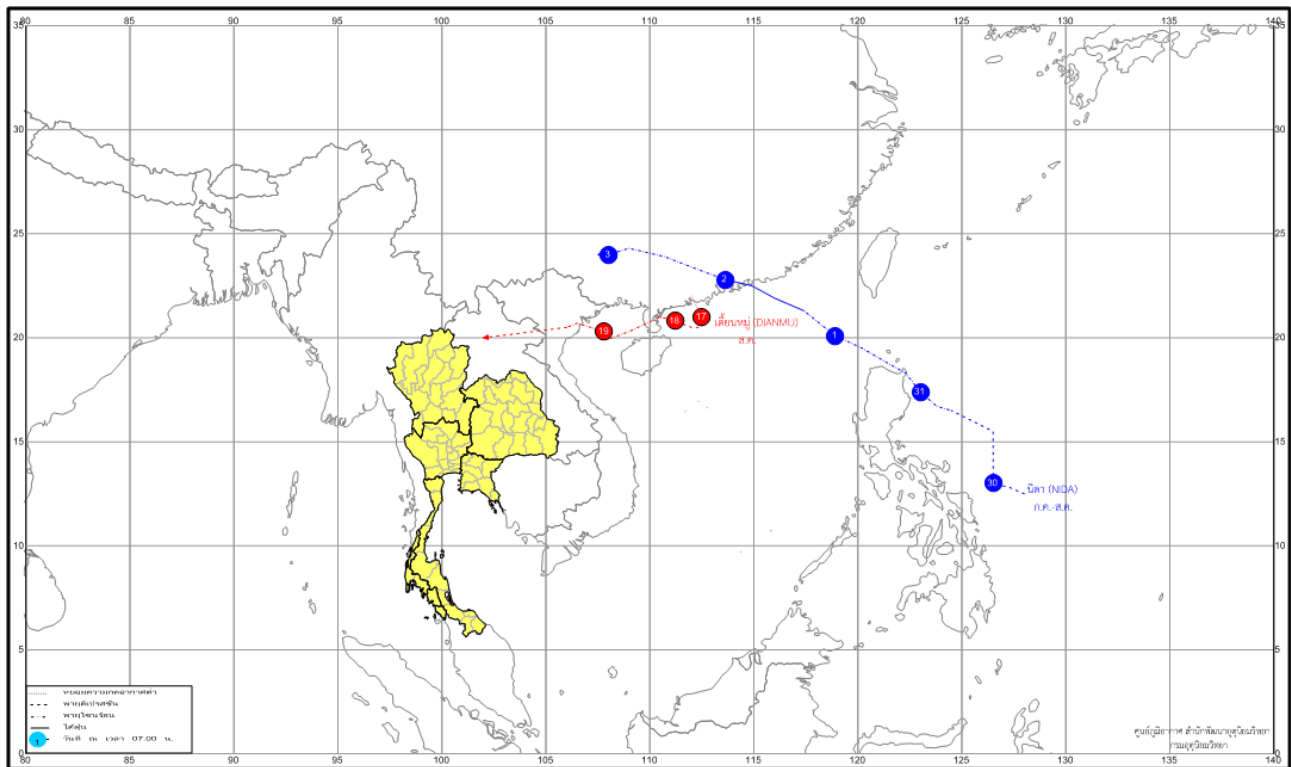
Monthly Weather Summary in Thailand August 2016

The periodically active southwest monsoon prevailing over the Andaman Sea, Southern Part and the Gulf of Thailand throughout the month accompanied with the monsoon trough lay across northern and upper northeastern parts in some periods. Besides, during middle August the tropical storm “DIANMU (1608)” in the South China Sea made landfall over the northern part of Vietnam and moved inland before weakened gradually. It finally degenerated into an area of low pressure over the northern part of Laos. These conditions brought continuously light to moderate rainfall occurred in most of Thailand almost the whole month. Monthly rainfall was below normal in all parts i.e. northern part 28.3 mm (13%), eastern part 29.2 mm (10%) and southern part (east coast) 24.0 mm (19%) except for above normal rainfall in central part 49.5 mm (27%) and southern part (west coast) 97.2 mm (24%). However rainfall was nearby the normal in northeastern part. Overall, the monthly total rainfall was nearby the normal and the accumulated rainfall since 1 January was about 1% above the normal.

1 – 10 August: The moderate southwest monsoon prevailed over the Andaman Sea, Thailand and the Gulf of Thailand almost the whole period. In addition, the monsoon trough lay across northern and upper northeastern parts into the low pressure cell covered Laos and upper Vietnam on 4 and 5. These caused scattered rain over upper Thailand except for fairly widespread to widespread rain during mid-period with heavy to very heavy rainfall in some areas almost the whole period. The maximum daily rainfall of 235.7 mm was measured at Tha Mai in Chantha Buri province on August 9. In southern part, scattered to fairly widespread rain with heavy to very heavy rainfall in some areas along east coast while in west coast, fairly widespread to widespread rain almost the whole period with heavy to very heavy rainfall in some areas and the highest rainfall amount was 174.9 mm at Mueang in Ranong province on August 3.

11 – 20 August: The active southwest monsoon prevailed over the Andaman Sea, Thailand and the Gulf of Thailand throughout the period. In addition, the monsoon trough lay across Myanmar, upper northern part of Thailand and Laos during beginning and middle of the period after that it moved northwards to lie across Myanmar, Laos and upper Vietnam. Moreover, the tropical depression in the upper South China Sea intensified into tropical storm “DIANMU (1608)” in the morning of 18 Aug then moving pass southern China near Hainan Island to the Gulf of Tonkin before made landfall over southern of Hanoi, Vietnam in the morning of the next day. After that, it respectively weakened and finally it degenerated into an area of low pressure over Laos on August 20. These caused scattered to fairly widespread rain over upper Thailand with heavy to very heavy rainfall in some areas especially fairly widespread to widespread rain almost the whole period in northern part with heavy to very heavy rainfall in several areas. The maximum daily rainfall of 188.8 mm was measured at Pua in Nan province on August 14. Flash floods occurred at Mae Hong Son province on August 13, at Chiang Rai province on August 14, at Payao, Nan and Tak provinces on August 15. Southern Thailand obtained scattered to fairly widespread rain almost the whole period with heavy rainfall in some areas along east coast while in west coast fairly widespread to widespread rain occurred with heavy to very heavy rainfall in some areas. The heaviest daily rainfall was 122.8 mm at Mueang in Trang province on August 13.

21 – 31 August: The monsoon trough lay across Myanmar, Laos and upper Vietnam from the last period moved southwards to lie across northern, upper central and northeastern parts of Thailand. In addition, southwest monsoon which prevailing over the Andaman Sea, Thailand and the Gulf of Thailand was moderate almost the whole period. Under these influence, upper Thailand received scattered to fairly widespread rain almost the whole period with heavy to very heavy rainfall in some areas. The maximum daily rainfall in upper Thailand was 161.0 mm at Wat Lanbun School, Khet Lat Krabang in Bangkok on August 24. Flash floods occurred at Kamphaeng Phet and Chiang Mai provinces on August 25. Southern Thailand obtained scattered to fairly widespread rain almost the whole period with heavy to very heavy rainfall in some areas along the east coast. Fairly widespread to widespread rain almost the whole period with heavy to very heavy rainfall in some areas was found along the west coast. The highest daily rainfall amount was 132.1 mm at Thalang in Phuket province on August 24.



Tropical storm tracks in August 2016

Note : Rainfall, temperatures and natural disasters in this report were updated up to September 2, 2016

Climatological Center
 Meteorological Development Bureau
 Meteorological Department

Monthly Current Report
Rainfall and Accumulative Rainfall
August 2016

Northern Thailand

Station	Temperature (°c)		Rainfall (mm)		Accumulative rainfall (mm) Since 1 January	
	Mean	Above or below normal	Actual	Above or below normal	Actual	Above or below normal
Chiang Rai	27.0	0.5	396.7	38.3	1377.4	168.9
Mae Hong Son	27.3	0.4	234.6	-4.7	822.3	-101.3
Phayao	27.3	0.6	162.5	-41.5	557.4	-205.2
Chiang Mai	27.7	0.9	132.1	-84.8	713.2	-18.6
Tha Wang Pha	27.6	0.7	411.1	113.3	1358.7	284.1
Nan	27.7	0.4	300.4	27.2	1150.4	216.8
Lamphun	27.7	0.4	164.5	-8.2	877.5	243.5
Lampang	27.6	0.2	219.2	32.9	750.0	50.9
Mae Sariang	26.5	0.3	147.2	-73.2	615.2	-198.6
Phrae	27.6	0.2	284.7	79.2	945.2	144.3
Uttaradit	28.2	0.2	130.1	-133.3	745.9	-234.7
Bhumibol Dam	28.4	0.3	45.4	-66.6	493.7	-85.8
Tak	28.6	0.7	63.4	-52.4	509.5	-77.2
Mae Sot	26.1	0.5	292.5	-29.2	859.7	-290.8
Umphang	24.9	0.6	247.8	-0.6	888.4	-139.2
Phitsanulok	28.6	0.5	117.2	-130.4	857.9	-5.5
Lom Sak	27.7	0.4	88.5	-109.6	772.6	30.0
Phetchabun	28.2	0.9	131.6	-67.4	672.8	-145.1
Wichian Buri	28.7	0.6	114.3	-94.9	586.7	-231.6
Kamphaeng Phet	28.4	0.6	211.1	40.6	741.6	-53.8
Over the area	27.6	0.5	194.7	-28.3 -13%	814.8	-32.6 -4%

Northeastern Thailand

Station	Temperature (°c)		Rainfall (mm)		Accumulative rainfall (mm) Since 1 January	
	Mean	Above or below normal	Actual	Above or below normal	Actual	Above or below normal
Nong Khai	28.2	0.7	438.8	115.6	1483.8	243.2
Loei	27.8	0.7	277.9	93.0	980.9	127.0
Udon Thani	28.4	0.6	293.4	8.3	1110.1	34.5
Nakhon Phanom	27.8	0.8	697.7	117.4	1959.1	14.0
Sakon Nakhon	28.0	0.6	264.7	-93.2	996.4	-329.4
Mukdahan	28.6	1.3	249.1	-101.6	894.1	-257.7
Khon Kaen	28.2	0.5	225.2	8.8	803.9	-73.2
Kosum Phisai	28.8	0.8	355.9	124.0	1200.6	310.1
Roi Et	29.1	1.2	314.4	62.2	975.6	-22.0
Chaiyaphum	28.4	0.8	113.2	-83.0	739.3	-7.8
Ubon Ratchathani	28.7	1.1	172.9	-130.4	1272.3	131.1
Tha Tum	29.1	0.9	108.4	-119.5	921.6	-55.0
Surin	28.6	1.0	323.0	66.8	967.2	-50.8
Nakhon Ratchasima	29.1	1.0	154.2	-3.0	736.6	66.3
Chok Chai	28.9	1.0	74.0	-79.5	638.1	-28.2
Nang Rong	28.4	0.6	196.2	14.5	939.6	159.8
Over the area	28.5	0.8	266.2	0.0 0%	1038.7	16.3 2%

- NOTES :
- 1) Mean temperature is the average of daily dry-bulb temperature
 - 2) "T" is trace, rainfall amount less than 0.1 mm.
 - 3) "blank" is incomplete data.
 - 4) Temperature and rainfall are preliminary data.

Monthly Current Report
Rainfall and Accumulative Rainfall
August 2016

Central Thailand

Station	Temperature (°c)		Rainfall (mm)		Accumulative rainfall (mm) Since 1 January	
	Mean	Above or below normal	Actual	Above or below normal	Actual	Above or below normal
Nakhon Sawan	28.6	0.2	382.8	204.5	784.8	57.5
Bua Chum	28.7	0.7	181.7	12.5	679.6	-2.1
Lop Buri	29.4	1.1	206.2	55.3	767.3	99.0
Suphan Buri	29.8	1.3	100.2	-18.2	646.2	141.7
Thong Pha Phum	27.0	0.7	276.8	-66.9	988.4	-354.3
Kanchanaburi	29.9	1.5	146.9	48.6	597.4	35.5
Bangkok Airport	30.0	1.2	201.7	30.8	816.9	-38.1
Bangkok Metropolis	29.7	0.9	348.8	129.5	1227.0	261.0
Over the area	29.1	0.9	230.6	49.5 27%	813.5	25.1 3%

Eastern Thailand

Station	Temperature (°c)		Rainfall (mm)		Accumulative rainfall (mm) Since 1 January	
	Mean	Above or below normal	Actual	Above or below normal	Actual	Above or below normal
Prachin Buri	29.4	1.1	270.3	-88.2	1196.0	-80.3
Kabin Buri	28.3	0.6	293.4	3.0	941.3	-164.7
Aranyaprathet	29.1	1.3	139.2	-69.4	747.5	-130.5
Chon Buri	30.2	1.2	244.6	90.5	785.8	22.3
Ko Sichang	29.7	1.0	111.2	-25.6	562.8	-110.7
Pattaya	29.5	1.1	53.2	-44.4	660.1	50.6
Sattahip	29.5	0.7	85.2	-23.8	850.6	149.4
Rayong	29.5	0.7	111.3	-21.0	771.0	-105.9
Chanthaburi	28.8	1.3	499.7	2.5	2193.0	55.3
Khlong Yai	28.1	1.1	925.0	-115.4	3720.8	28.3
Over the area	29.2	1.0	273.3	-29.2 -10%	1242.9	-28.7 -2%

- NOTES :
- 1) Mean temperature is the average of daily dry-bulb temperature
 - 2) "T" is trace, rainfall amount less than 0.1 mm.
 - 3) "blank" is incomplete data.
 - 4) Temperature and rainfall are preliminary data.

Monthly Current Report
Rainfall and Accumulative Rainfall
August 2016

Southern Thailand, east coast

Station	Temperature (°c)		Rainfall (mm)		Accumulative rainfall (mm) Since 1 January	
	Mean	Above or below normal	Actual	Above or below normal	Actual	Above or below normal
Phetchaburi	29.9	1.3	117.1	24.8	401.1	-48.8
Hua Hin	29.9	1.4	71.3	0.1	332.1	-147.3
Prachuap Khiri Khan	29.0	1.2	68.0	-31.1	512.6	-82.4
Chumphon	27.8	0.7	154.8	-52.7	819.2	-212.4
Surat Thani	27.4	0.4	111.9	-27.7	577.7	-160.2
Ko Samui	29.2	1.0	76.8	-34.1	601.2	-210.5
Nakhon Si Thammarat	28.4	0.6	37.6	-92.2	570.1	-378.9
Songkhla	29.3	1.1	184.5	75.1	702.5	20.4
Hat Yai Airport	28.1	0.7	89.8	-23.2	587.6	-168.8
Pattani Airport	28.4	0.9	56.8	-77.2	624.0	-92.9
Narathiwat	28.7	1.3	132.4	-25.9	992.7	89.6
Over the area	28.7	0.9	100.1	-24.0 -19%	611.0	-126.7 -17%

Southern Thailand, west coast

Station	Temperature (°c)		Rainfall (mm)		Accumulative rainfall (mm) Since 1 January	
	Mean	Above or below normal	Actual	Above or below normal	Actual	Above or below normal
Ranong	27.1	0.3	1005.6	216.5	2883.1	83.5
Takua Pa	27.7	0.3	566.1	21.1	3268.7	1027.0
Phuket	28.4	0.3	360.7	73.9	1346.4	58.0
Phuket Airport	28.7	0.7	562.4	232.6	2328.2	880.9
Ko Lanta	28.9	0.7	372.2	68.0	1692.7	374.5
Trang Airport	27.7	0.7	363.3	88.2	1549.5	320.9
Satun	28.1	0.7	239.6	-19.7	930.9	-370.8
Over the area	28.1	0.5	495.7	97.2 24%	1999.9	339.1 20%

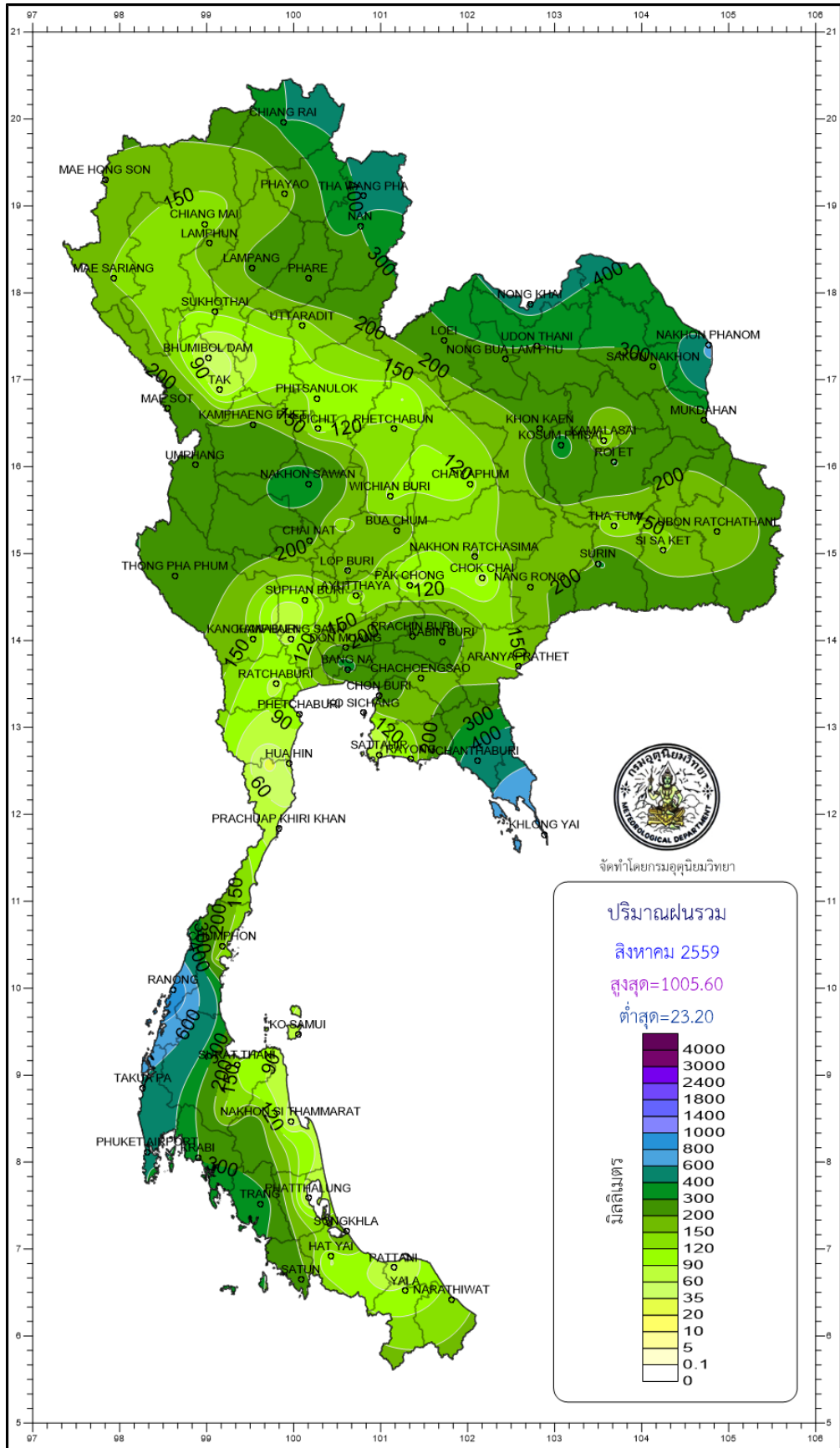
- NOTES :
- 1) Mean temperature is the average of daily dry-bulb temperature
 - 2) "T" is trace, rainfall amount less than 0.1 mm.
 - 3) "blank" is incomplete data.
 - 4) Temperature and rainfall are preliminary data.

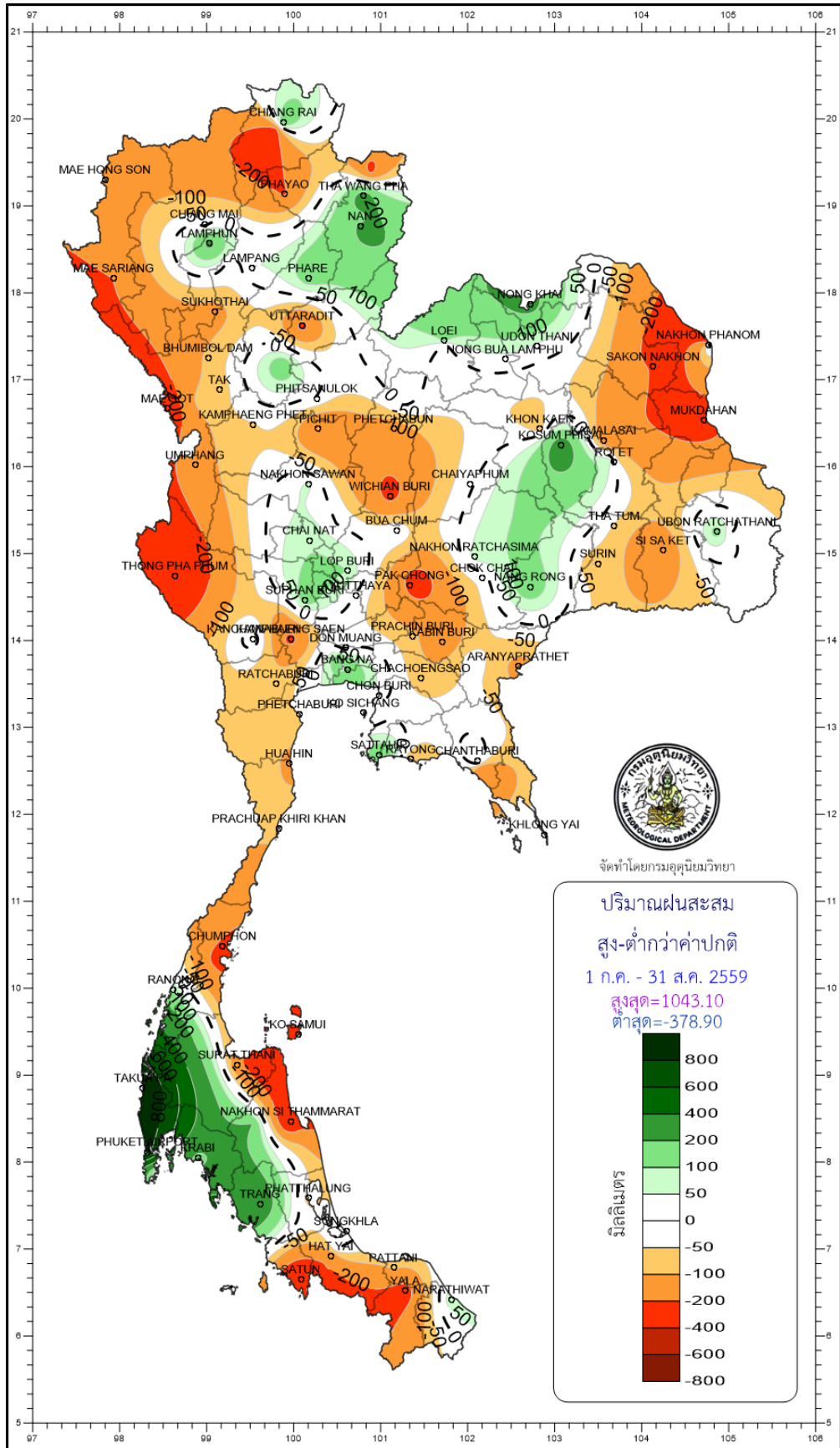
Monthly Current Report

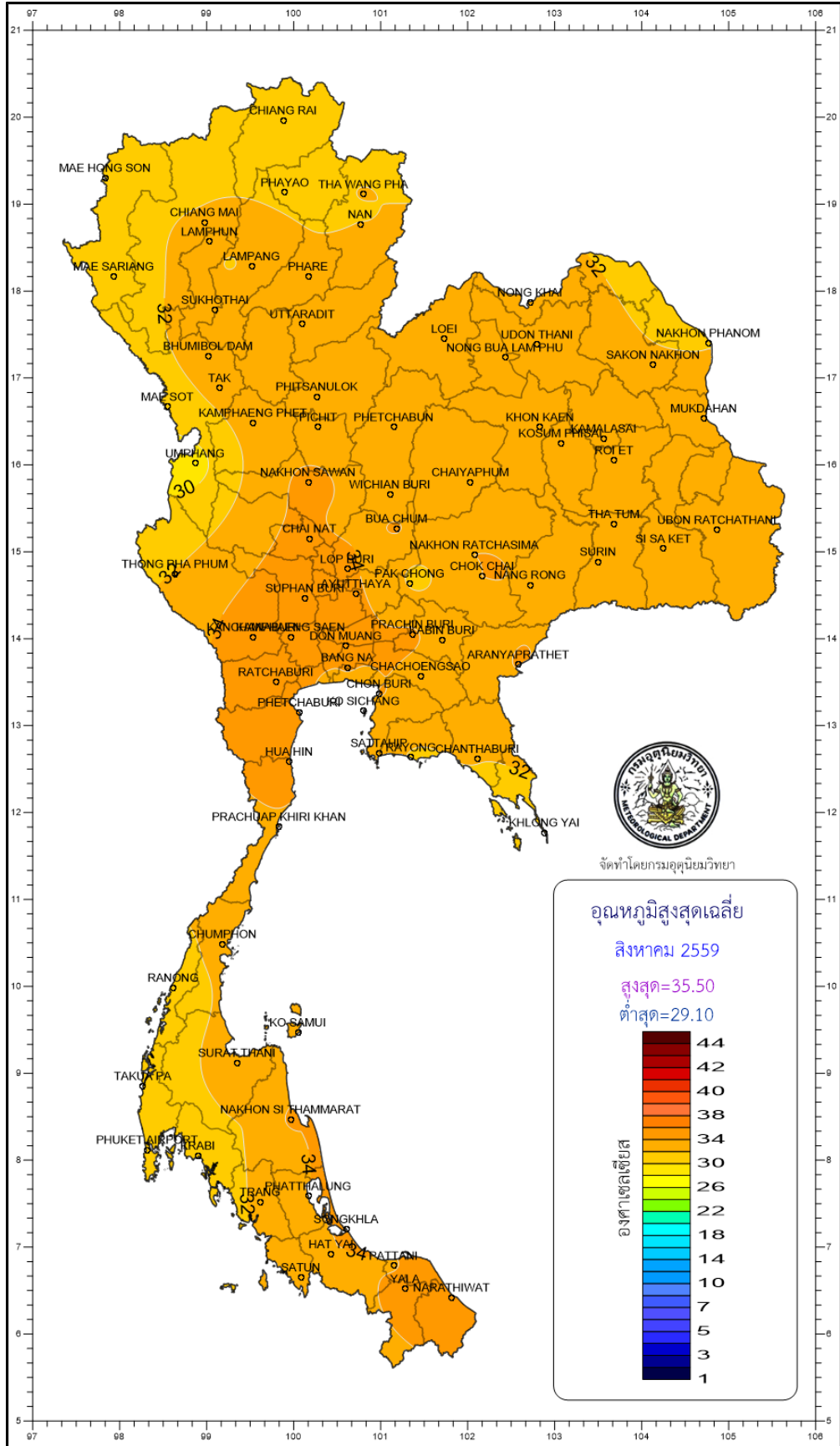
August 2016

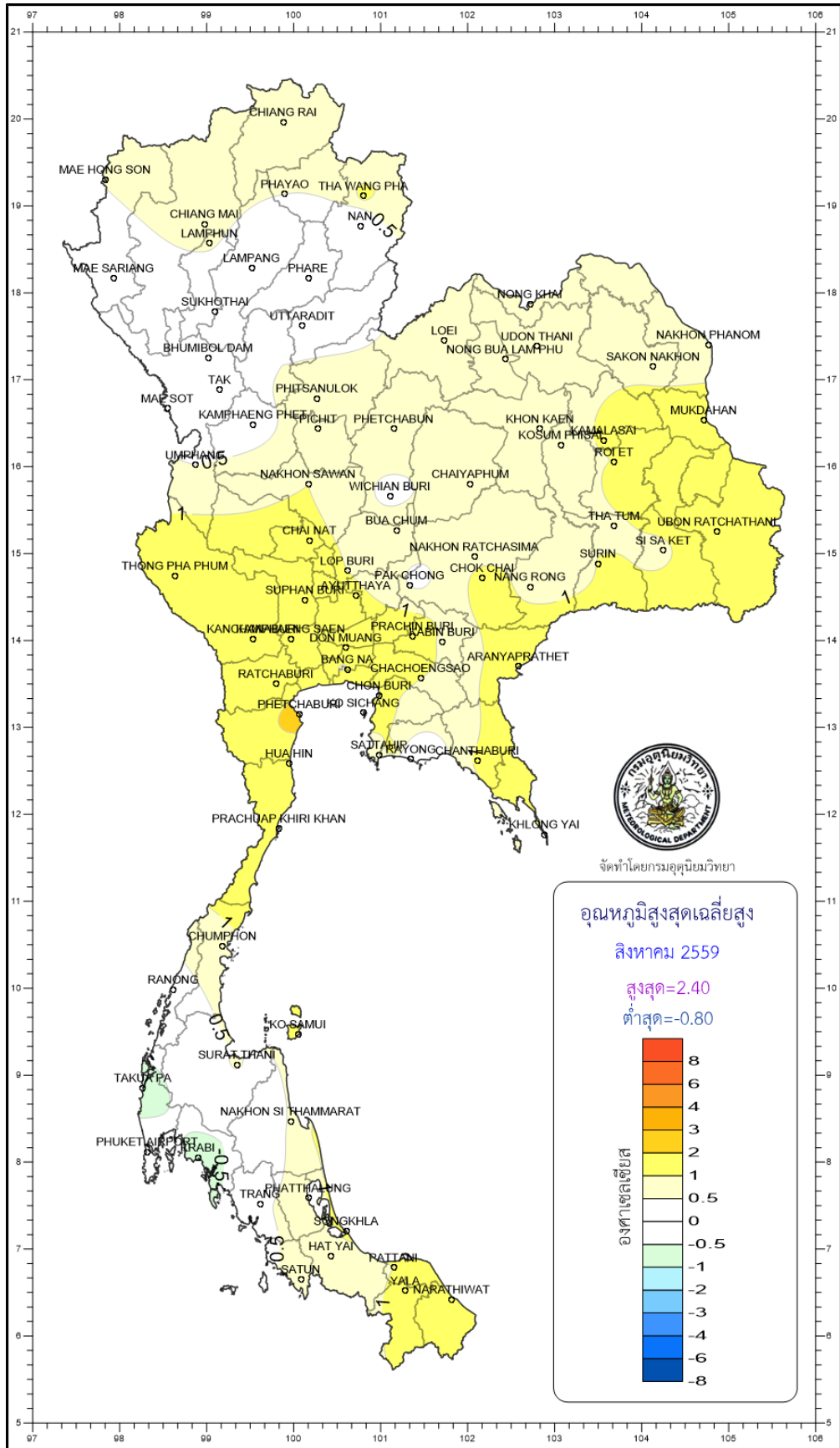
Region	Station	Temperature (°c)		Rainfall (mm)		Accumulative rainfall (mm) Since 1 January	
		Mean	Above or below normal	Actual	Above or below normal	Actual	Above or below normal
North	Chiang Rai	27.0	0.5	396.7	38.3	1377.4	168.9
	Mae Hong Son	27.3	0.4	234.6	-4.7	822.3	-101.3
	Phayao	27.3	0.6	162.5	-41.5	557.4	-205.2
	Chiang Mai	27.7	0.9	132.1	-84.8	713.2	-18.6
	Tha Wang Pha	27.6	0.7	411.1	113.3	1358.7	284.1
	Nan	27.7	0.4	300.4	27.2	1150.4	216.8
	Lamphun	27.7	0.4	164.5	-8.2	877.5	243.5
	Lampang	27.6	0.2	219.2	32.9	750.0	50.9
	Mae Sariang	26.5	0.3	147.2	-73.2	615.2	-198.6
	Phrae	27.6	0.2	284.7	79.2	945.2	144.3
	Uttaradit	28.2	0.2	130.1	-133.3	745.9	-234.7
	Bhumibol Dam	28.4	0.3	45.4	-66.6	493.7	-85.8
	Tak	28.6	0.7	63.4	-52.4	509.5	-77.2
	Mae Sot	26.1	0.5	292.5	-29.2	859.7	-290.8
	Umphang	24.9	0.6	247.8	-0.6	888.4	-139.2
	Phitsanulok	28.6	0.5	117.2	-130.4	857.9	-5.5
	Lom Sak	27.7	0.4	88.5	-109.6	772.6	30.0
	Phetchabun	28.2	0.9	131.6	-67.4	672.8	-145.1
	Wichian Buri	28.7	0.6	114.3	-94.9	586.7	-231.6
	Kamphaeng Phet	28.4	0.6	211.1	40.6	741.6	-53.8
Northeast	Nong Khai	28.2	0.7	438.8	115.6	1483.8	243.2
	Loei	27.8	0.7	277.9	93.0	980.9	127.0
	Udon Thani	28.4	0.6	293.4	8.3	1110.1	34.5
	Nakhon Phanom	27.8	0.8	697.7	117.4	1959.1	14.0
	Sakon Nakhon	28.0	0.6	264.7	-93.2	996.4	-329.4
	Mukdahan	28.6	1.3	249.1	-101.6	894.1	-257.7
	Khon Kaen	28.2	0.5	225.2	8.8	803.9	-73.2
	Kosum Phisai	28.8	0.8	355.9	124.0	1200.6	310.1
	Roi Et	29.1	1.2	314.4	62.2	975.6	-22.0
	Chaiyaphum	28.4	0.8	113.2	-83.0	739.3	-7.8
	Ubon Ratchathani	28.7	1.1	172.9	-130.4	1272.3	131.1
	Tha Tum	29.1	0.9	108.4	-119.5	921.6	-55.0
	Surin	28.6	1.0	323.0	66.8	967.2	-50.8
	Nakhon Ratchasima	29.1	1.0	154.2	-3.0	736.6	66.3
	Chok Chai	28.9	1.0	74.0	-79.5	638.1	-28.2
Nang Rong	28.4	0.6	196.2	14.5	939.6	159.8	
Central	Nakhon Sawan	28.6	0.2	382.8	204.5	784.8	57.5
	Bua Chum	28.7	0.7	181.7	12.5	679.6	-2.1
	Lop Buri	29.4	1.1	206.2	55.3	767.3	99.0
	Suphan Buri	29.8	1.3	100.2	-18.2	646.2	141.7
	Thong Pha Phum	27.0	0.7	276.8	-66.9	988.4	-354.3
	Kanchanaburi	29.9	1.5	146.9	48.6	597.4	35.5
	Bangkok Airport	30.0	1.2	201.7	30.8	816.9	-38.1
	Bangkok Metropolis	29.7	0.9	348.8	129.5	1227.0	261.0
East	Prachin Buri	29.4	1.1	270.3	-88.2	1196.0	-80.3
	Kabin Buri	28.3	0.6	293.4	3.0	941.3	-164.7
	Aranyaprathet	29.1	1.3	139.2	-69.4	747.5	-130.5
	Chon Buri	30.2	1.2	244.6	90.5	785.8	22.3
	Ko Sichang	29.7	1.0	111.2	-25.6	562.8	-110.7
	Pattaya	29.5	1.1	53.2	-44.4	660.1	50.6
	Sattahip	29.5	0.7	85.2	-23.8	850.6	149.4
	Rayong	29.5	0.7	111.3	-21.0	771.0	-105.9
	Chanthaburi	28.8	1.3	499.7	2.5	2193.0	55.3
	Khlong Yai	28.1	1.1	925.0	-115.4	3720.8	28.3
South (East Coast)	Phetchaburi	29.9	1.3	117.1	24.8	401.1	-48.8
	Hua Hin	29.9	1.4	71.3	0.1	332.1	-147.3
	Prachuap Khiri Khan	29.0	1.2	68.0	-31.1	512.6	-82.4
	Chumphon	27.8	0.7	154.8	-52.7	819.2	-212.4
	Surat Thani	27.4	0.4	111.9	-27.7	577.7	-160.2
	Ko Samui	29.2	1.0	76.8	-34.1	601.2	-210.5
	Nakhon Si Thammarat	28.4	0.6	37.6	-92.2	570.1	-378.9
	Songkhla	29.3	1.1	184.5	75.1	702.5	20.4
	Hat Yai Airport	28.1	0.7	89.8	-23.2	587.6	-168.8
	Pattani Airport	28.4	0.9	56.8	-77.2	624.0	-92.9
Narathiwat	28.7	1.3	132.4	-25.9	992.7	89.6	
South (West Coast)	Ranong	27.1	0.3	1005.6	216.5	2883.1	83.5
	Takua Pa	27.7	0.3	566.1	21.1	3268.7	1027.0
	Phuket	28.4	0.3	360.7	73.9	1346.4	58.0
	Phuket Airport	28.7	0.7	562.4	232.6	2328.2	880.9
	Ko Lanta	28.9	0.7	372.2	68.0	1692.7	374.5
	Trang Airport	27.7	0.7	363.3	88.2	1549.5	320.9
	Satun	28.1	0.7	239.6	-19.7	930.9	-370.8
	Over the area	28.4	0.8	240.3	-0.6	1007.9	6.9
					0%		1%

- NOTES :
- 1) Mean temperature is the average of daily dry-bulb temperature
 - 2) "T" is trace, rainfall amount less than 0.1 mm.
 - 3) "blank" is incomplete data.
 - 4) Temperature and rainfall are preliminary data.









จัดทำโดยกรมอุตุนิยมวิทยา

